



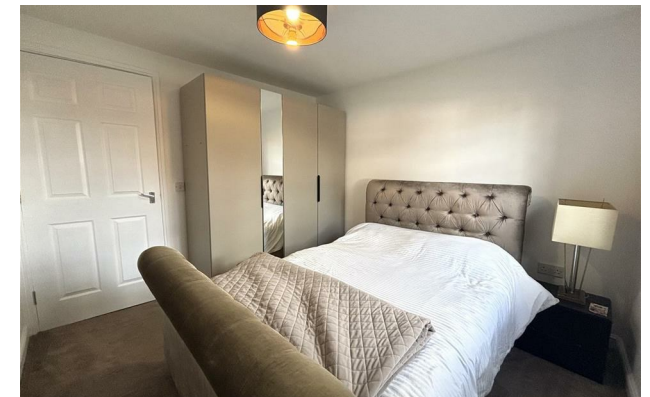
WILMSLOW
COURT

jordan fishwick

4 Wilmslow Court Sagars Road, SK9 3TW
Guide Price £199,950

Sagars Road Handforth SK9 3TW

Guide Price £199,950



NO CHAIN - Jordan Fishwick are pleased to present this fabulous sized two bedroom, two bathroom, ground floor apartment located in a central Handforth location. Handforth Village offers a wide range of amenities such as local shopping facilities, bars and restaurants. Wilmslow Court is also in a great position for many transport links with Manchester Airport being less than a 20 minute drive away and Wilmslow train station offering direct train lines to Manchester Piccadilly and London Euston. In brief the property comprises a communal entrance hallway, leading into a spacious private hallway, two double bedrooms one of which benefits from a three piece en-suite and a family bathroom with feature freestanding bath. A large open plan kitchen/living area creates a sociable atmosphere, with the kitchen offering a handful of integrated appliances. This property is ideal for first time buyers or buy to let investors.



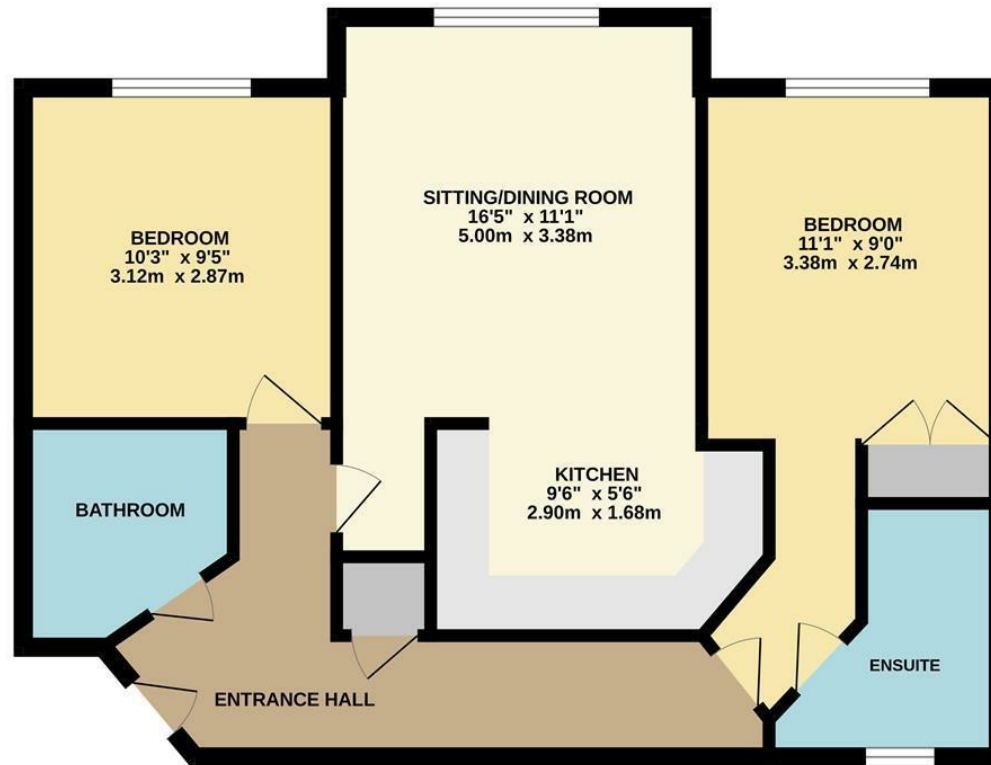
- Ground Floor Apartment
- Two Bedrooms
- Two Bathrooms
- Open Plan Kitchen/Living Area
- Handforth Village Location
- Great Transport Links
- Residents Parking



Energy Efficiency Rating		
	Current	Potential
Very energy efficient - lower running costs		
(92 plus) A		
(81-91) B		
(69-80) C		79
(55-68) D	60	
(39-54) E		
(21-38) F		
(1-20) G		
Not energy efficient - higher running costs		
England & Wales	EU Directive 2002/91/EC	



GROUND FLOOR



Measurements are approximate. Not to scale. Illustrative purposes only.
Made with Metropix ©2024



These particulars are believed to be accurate but they are not guaranteed and do not form a contract. Neither Jordan Fishwick nor the vendor or lessor accept any responsibility in respect of these particulars, which are not intended to be statements or representations of fact and any intending purchaser or lessee must satisfy himself by inspection or otherwise as to the correctness of each of the statements contained in these particulars. Any floorplans on this brochure are for illustrative purposes only and are not necessarily to scale.

Offices at: Chorlton, Didsbury, Disley, Hale, Glossop, Macclesfield, Manchester Deansgate, Manchester Whitworth Street, New Mills, Sale, Wilmslow and Withington

36-38 Alderley Road, Wilmslow SK91JX
01625 532000

wilmslow@jordanfishwick.co.uk
www.jordanfishwick.co.uk